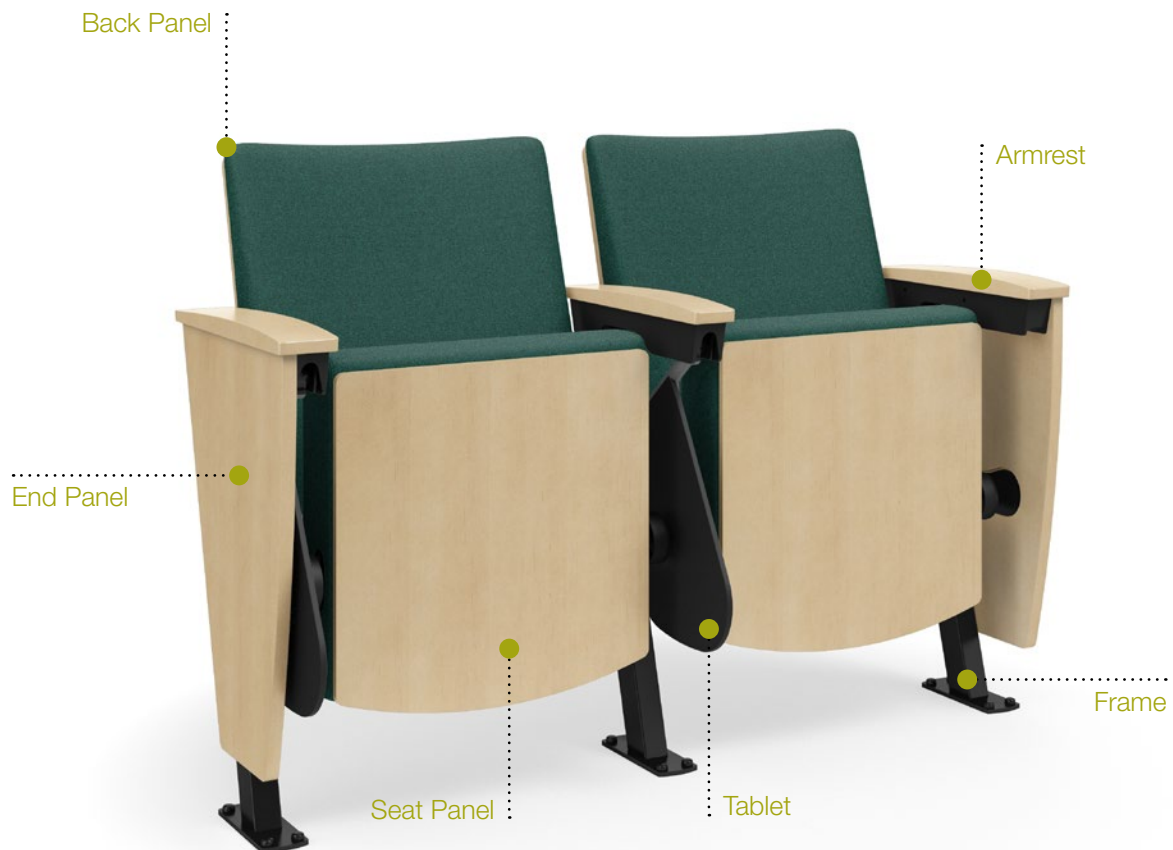


# E10 Finish Guide



## Finishes & Textiles

SEAT & BACK PANELS: Upholstery, Laminate or Wood

END PANELS: Upholstery, Laminate or Wood

ARMRESTS: Upholstery or Wood

TABLET: Black Phenolic

FRAME: Black

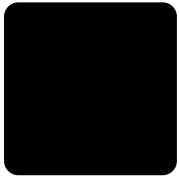
TEXTILES:

- Fabric – Camira Era, Camira Xtreme Card or Camira X2 Card
- Coated Fabric – Spradling Coated Card

# Finishes

---

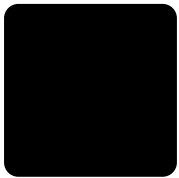
## Frame



Black

---

## Tablet



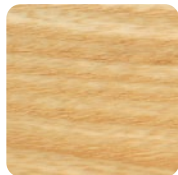
Black Phenolic

---

## Standard Wood Stains (Armrests, Back, Seat & End Panels)



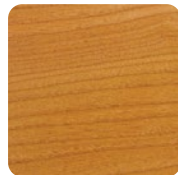
Natural Maple



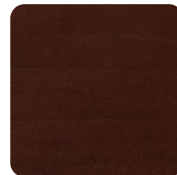
Morning Ash



Chamomile



Amber Cherry



Parlor Cherry



Judicial Walnut



Wenge



Ebony

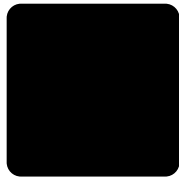
Standard Laminates (Back, Seat & End Panels)



Bronze Legacy  
4656-60



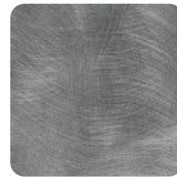
Navy Legacy  
4651-60



Black  
1595-60



Woolamai Brush  
4746-60



Pewter Brush  
4779-60



Titanium EV  
4810-60



Tungsten EV  
4814-60



Nickel EV  
4813-60



Carbon EV  
4820-60



White Nebula  
4621-60



Grey Nebula  
4622-60



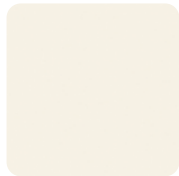
Natural Nebula  
4633-60



Cloud Nebula  
4630-60



Graphite Nebula  
4623-60



White Sand  
D403-60



Putty  
1503-60



Beige  
1530-60



Dove Grey  
D92-60



North Sea  
D90-60



White Tigris  
4783-60



Natural Tigris  
4669-60



Evening Tigris  
4674-60



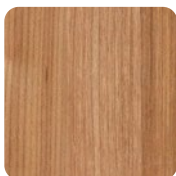
Fusion Maple  
7909-60



Kensington Maple  
10776-60



Monticello Maple  
7925-38



River Cherry  
7937-38

# Textiles

---

Camira Era Card > [click to view](#)



Era (Grade 2)

---

Camira X2 Card > [click to view](#)



X2 (Grade 3)

---

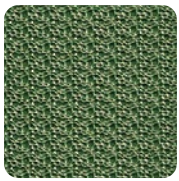
Camira Xtreme Card > [click to view](#)



Xtreme (Grade 3)

---

Spradling Coated Card > [click to view](#)



Hitch  
(Grade 4)



Silvertex  
(Grade 4)



Dolce  
(Grade 5)

\* Refer to website for full range of colors