

P10 Finish Guide



Finishes & Textiles

SEAT & BACK PANELS: Upholstery, Laminate or Wood

END PANELS: Upholstery, Laminate or Wood

ARMRESTS: Poly, Upholstery or Wood

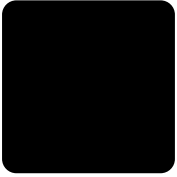
FRAME: Black

TEXTILES:

- Fabric – Camira Era, Camira Xtreme Card or Camira X2 Card
- Coated Fabric – Spradling Coated Card

Finishes

Frame



Black

Standard Wood Stains (Armrests, Back, Seat & End Panels)



Natural Maple



Morning Ash



Chamomile



Amber Cherry



Parlor Cherry



Judicial Walnut



Wenge



Ebony

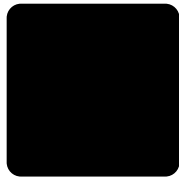
Standard Laminates (Back, Seat, & End Panels)



Bronze Legacy
4656-60



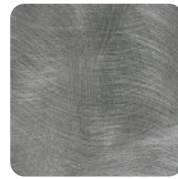
Navy Legacy
4651-60



Black
1595-60



Woolamai Brush
4746-60



Pewter Brush
4779-60



Titanium EV
4810-60



Tungsten EV
4814-60



Nickel EV
4813-60



Carbon EV
4820-60



White Nebula
4621-60



Grey Nebula
4622-60



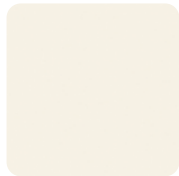
Natural Nebula
4633-60



Cloud Nebula
4630-60



Graphite Nebula
4623-60



White Sand
D403-60



Putty
1503-60



Beige
1530-60



Dove Grey
D92-60



North Sea
D90-60



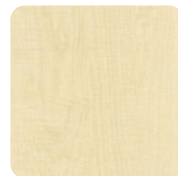
White Tigris
4783-60



Natural Tigris
4669-60



Evening Tigris
4674-60



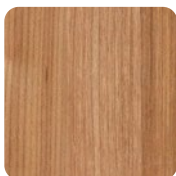
Fusion Maple
7909-60



Kensington Maple
10776-60



Monticello Maple
7925-38



River Cherry
7937-38

Textiles

Camira Era Card > [click to view](#)



Era (Grade 2)

Camira X2 Card > [click to view](#)



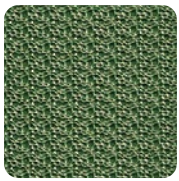
X2 (Grade 3)

Camira Xtreme Card > [click to view](#)



Xtreme (Grade 3)

Spradling Coated Card > [click to view](#)



Hitch
(Grade 4)



Silvertex
(Grade 4)



Dolce
(Grade 5)

* Refer to website for full range of colors