

# Turandot Finish Guide



## Finishes

STACK / CASTER / SLED BASE: Silver, Black, Champagne, Charcoal, Anthracite

TASK BASE: Black

BACK: Poly, Upholstery

SEAT: Poly, Upholstery

POLY: Flannel, Black, White,\* Light Grey,\* Green,\* Orange,\* Red,\* Blue\*

TEXTILES: (seat & back)

- Fabric: Camira Era, Camira Xtreme Card & Camira X2 Card
- Coated Fabric: Spradling Coated Card & Spradling Valencia Vinyl Card

\*300 Minimum

# Finishes

---

## Base



Silver



Black



Champagne



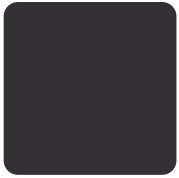
Charcoal



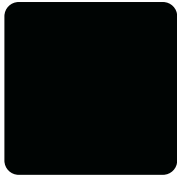
Anthracite

---

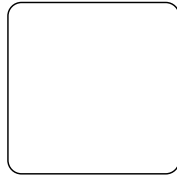
## Poly



Flannel



Black



White\*



Light Grey\*



Green\*



Orange\*



Red\*



Blue\*

*\*300 Minimum*

# Textiles

---

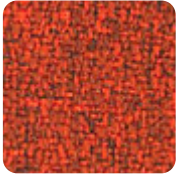
Camira Era Card > [click to view](#)



Era (Grade 2)

---

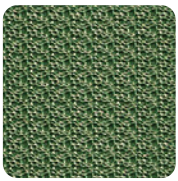
Camira X2 Card > [click to view](#)



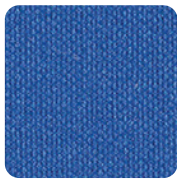
X2 (Grade 3)

---

Spradling Coated Card > [click to view](#)



Hitch  
(Grade 4)



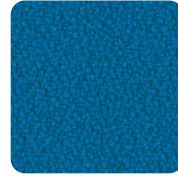
Silvertex  
(Grade 4)



Dolce  
(Grade 5)

---

Camira Xtreme Card > [click to view](#)



Xtreme (Grade 3)

---

Spradling Valencia Vinyl Card > [click to view](#)



Valencia  
(Grade 4)

\* Refer to website for full range of colors